

Due to the COVID-19 crisis, many events of our Chamber members as well as the Chamber have been postponed to future dates. Please check the Chamber Website for details and frequent updates: www.jeffcountychamber.org/events



May 2021

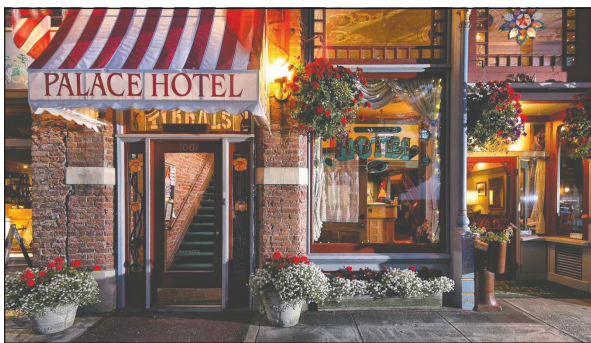
Business Insider

Serving the Businesses and Citizens of Jefferson County

Article courtesy of the Chamber of Jefferson County

Book a stay in Jefferson County!

Jefferson County represents a vacation experience unlike any other to be found on the Olympic Peninsula. It features diverse areas of interest such as maritime activities, trails for outdoor enthusiasts, agritourism experiences and plenty for history buffs to appreciate with the Victorian history and architecture in Port Townsend. Making visitor's stays even better are the numerous accommodation options in the county. Here are a few highlights that keep guest coming back for more!



The Palace Hotel is a great downtown Port Townsend location featuring historic architecture and charm. As with many local accommodations, the Palace has a unique history. "The Palace has been run as a hotel since it was built in 1889, which makes us one of the oldest continually operated hotels in Washington State. Once a hotel / tavern / brothel, all The Palace's 26 rooms are unique and named after historic local figures and 'ladies of the evening.' Stories of hauntings abound, and we keep a 'ghost book' full of personal experiences guests have had at the hotel throughout the years," shared Will Smallwood.

The hotel staff took the opportunity to do some upkeep over the colder months. "Under the direction of our head housekeeper, we have completed a systematic deep cleaning of every room in the hotel, as well as the lobby and other common areas. We have made repairs to some of the original 1889 windows, continued to refine our online reservation system, and launched a new and improved website, palacehotelpt.com," said Will.

The Blue Gull Inn bed and breakfast is another Port Townsend location with a unique history. "This is actually one of the first homes built in Port Townsend. It was built by ND Hill in 1868. That was 3 years after the end of the Civil War," shared John Eissing. "I say the Hill Family was very brave to come to Port Townsend from Whidbey Island when there was almost nothing here at the time."

The Blue Gull Inn also went through a lengthy upkeep process in the winter months. "We go through the entire Inn, paint, repair any damage, make sure that everything is working correctly and deep clean each guest room," shared John. "They are totally taken apart, everything is removed and cleaned, then put back together. Cleanliness has always been a priority for us (we hear that all the time from our guests) but even more important now."

The staff at the Blue Gull Inn also makes it easy for visitors to discover adventure in the local area. "In the entryway we provide maps of the area, we also provide a restaurant guide map, with all the places to



dine in our area," shared John. "In addition we have a list of 40 different fun activities to take advantage of while visiting our Historic Seaport."



The Swan Hotel is only a half-block from the water's edge in the heart of Port Townsend's cultural and historic district, steps away from local restaurants, shops, galleries, and parks. The hotel offers 13 private, maritime-inspired studios including four well-equipped cottages and a spacious penthouse suite. It has a colorful, yet patchwork kind of history, just as it has three distinct types of buildings on the property. After the city was settled, the property itself was originally owned by James Gilchrist Swan, a prominent citizen, and peacemaker with the local S'Klallam Native American Tribe.

► Continued on page 3



DIRECTOR'S REPORT

It is that time of year, yes, Spring too, and we are gearing up for the annual Jefferson County Community Leadership Awards on May 15th. This year we are again virtual and have assembled a great team of musicians, food, and fun along with the exciting group of nominees chosen by the community.



Arlene Alen

Tickets are on sale for the public to support these fabulous community heroes, your friends and neighbors who have been working tirelessly to assist our community in moving through this difficult pandemic year. Join us for the fun and prizes and help us honor these amazing people and especially our youth nominees who have had such a difficult school year and still managed to accomplish miracles.

Late last month we completed our alliance with SCORE Seattle to provide all our Jefferson County businesses the opportunity not only to take their fabulous business classes and workshops, but to also receive discounts on their membership for doing so. Imagine mostly free classes and workshops, the others at very low cost, all online and most available on demand. Some of the longer workshops are given only once a month or they are multiple classes over time, however most are 1-3 hours, and available whenever you have the time to log in and learn. Check out the entire program on our website, www.jeffcountychamber.org/business-workshops-mentoring.



UPTOWN

SERVICE TO OUR COMMUNITIES & BUSINESSES FOR 46 YEARS

Chosen each year
Best Shop in JeffCo.

Printery
COMMUNICATIONS
YES, WE CAN DO IT!

DESIGN/PRINT/WEB/SIGNS/MAILING

631 Tyler St Uptown | Printery.com | 385-1256 | info@printery.com

Spirits
BAR & GRILL at the



- GARDEN TO TABLE FAIRE
- AMAZING BAY VIEWS
- SERVING OUR COMMUNITY

310 Hadlock Bay Road | Port Hadlock, WA 98339
360-302-6348 | www.aldalcoholplant.com

- Brochures
- Branding
- Building Your Business

Behind The Leader's award-winning advertising and reporting team, are our brilliant designers.

Call us today and see what they can create for your business.
360-385-2900 • www.ptleader.com



CHAMBER CONTACTS

STAFF

Arlene Alen
Executive Director
director@jeffcountychamber.org
360-385-7869

Ashlyn Brown
Membership Experience Coordinator
membership@jeffcountychamber.org
360-385-7869

Administrative Assistant
admin@jeffcountychamber.org
360-385-7869

Ryan E. Tippetts
Communications Project Specialist
communications@jeffcountychamber.org
360-385-7869

2021 BOARD OF DIRECTORS

Richard Tucker
President
Jefferson Land Trust

Karen Best
Past President
Coldwell Banker Best Homes

Candice Cotterill
Treasurer
1st Security Bank

Cammy Brown
Peninsula Legal Secretarial Services, LLC

Brian Kuh
EDC Team Jefferson

Aislinn Diamanti
Fort Worden PDA

Scott Rogers
NW Properties
scott@nwproperties.org

Physical/Mailing Address:

Jefferson County Chamber of Commerce
2409 Jefferson St.,
Port Townsend, WA 98368

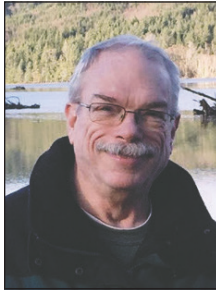
The content of this publication is prepared by the Jefferson County Chamber of Commerce. We welcome submissions from Chamber members. Send articles and photos to director@jeffcountychamber.org.

PRESIDENT'S REPORT

Happy Spring!

It has been an interesting year so far.

The vaccine is reaching more and more people. The state is re-opening and visitors are returning to our community. There is a sense of optimism tinged with caution. Mask wearing will be with us for some time as will social distancing. I know I will wear a mask next winter as this is the first year in a very long time that I haven't had a cold or the flu! Looking back on the past year since the pandemic started, I have



Richard Tucker

been wondering whether I have done enough to support our local businesses. I have always shopped locally whenever possible. I have even ventured into new shops in my effort to do so. We can find most everything we need for daily living here- maybe not the particular brand I usually use but a close facsimile. While I have been diligent in my quest to shop locally, I still find too many boxes on my front porch with the smile on the side. Last night before I clicked the buy now button, I put down my phone and asked myself where in town I could purchase the same or similar item. The next day I checked with a local pet store and sure enough they had exactly what I needed at comparable cost. It has now

become part of my shopping routine. Check before clicking. And as for gifts, gift certificates are an excellent way to support local businesses.

We all know our restaurants have been suffering. I love the restaurants in this community. I love the quality and selection of food available. Before Covid-19 I would eat out at least twice a week. One, I loved the food and two, to see and speak to the owners who have become good acquaintances and friends. I have tried to keep up that tradition even when the only contact we had was purchasing food and receiving it through a window. I still have to eat and restaurants need business.

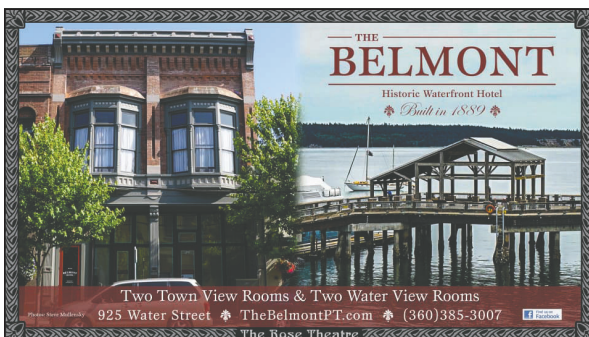
As the Spring turns into Summer, I am excited that our local farmers markets and farm stands will offer an abundance of fresh, locally grown food- vegetables,

meats, eggs and a whole host of other locally produced products such as krauts, cheeses, ciders and beers. There is nothing better than eating vegetables that were picked hours before and satisfying that we know the farmers who produced them. Our local farms are what make this community so special and are an important part of our local economy and more than ever, they need our support.

The past year has presented challenges that no one ever thought they would have to face. In response, our local businesses have come together and shown their resiliency by pivoting, introducing new products and developing a new way of doing business. By continuing to work together, we can make it through the other side of this time as a revitalized business community!

► Continued from pg. 1

Another great option is **The Belmont Hotel** which is located close to the historic Rose Theatre and Fort Worden State Park, enabling visitors to enjoy area attractions within minutes of their room. The hotel itself is an architectural masterpiece, filled with elegance and style. Whether you're in Port Townsend for a weekend stop or a week-long vacation, The Belmont is the perfect spot to call home. Enjoy



breathtaking views from their waterfront rooms or enjoy the town's architecture overlooking Water St., along with a plush bed and luxury bath.



Further out in the county, **The Resort at Port Ludlow** is comprised of a 37-room waterfront inn, 300-slip marina, 18-hole championship golf course, and award-winning restaurant.

Located on Ludlow Bay, the boutique hotel offers 35 spacious guest rooms and two suites that were all refreshed earlier this year with new paint,

carpet, flooring, and beds with locally made custom headboards. Every room includes a gas fireplace and oversized jetted tubs with locally made bath amenities and bamboo bath robes. Due to its beachside location, many rooms offer water or mountain views and private balconies.

The on-site award-winning **Fireside Restaurant** features farm-to-table dining with most ingredients sourced from the Olympic Peninsula area and a notable wine list that has garnered recognition from Washington State Wine Commission and Wine Spectator.

Amenities the resort offers include golf, watercraft, kayak and stand-up paddle board rentals to explore via the tranquil protected bay, and spa services provided by Ludlow Bay Massage & Wellness Spa (in-room services currently unavailable due to COVID).

The accommodations in the County ensure that our visitors have a great experience and hopefully encourage a return trip at some point in the future!

The Palace Hotel

1004 Water Street, Port Townsend, WA 98368
360-385-0773 • palachotelpt.com

The Blue Gull Inn

1310 Clay Street, Port Townsend, WA 98368
360-379-3241 • bluegullinn.com

The Swan Hotel

222 Monroe Street, Port Townsend, WA 98368
Toll Free: 1-800-776-1718 • Theswanhotel.com

The Belmont

925 Water Street, Port Townsend, WA 98368
360-385-3007 • thebelmontpt.com

The Resort at Port Ludlow

1 Heron Road, Port Ludlow, WA 98365
360-437-7000 • portludlowresort.com

COMMUNITY UPDATE

Taste Jefferson County

Article courtesy of the Chamber of Jefferson County

Jefferson County has many fantastic dining options, some of which are mobile! They cover a wide variety of food types from Southern inspired soul food, Texas BBQ and delicious Mexican food options. Here are a few of the food truck and pop-up options you might find on your visits around the county.



Mo Chilli BBQ features delicious Texas style BBQ. The food truck is moving to a new location at 1980 W. Sims Way at the former Metro Bagel Building. They are currently operating out of their food truck but are renovating the building with hopes for a summer open date. In the past Mo Chilli BBQ has provided vending at regular stops, local concerts, private catering, and weddings. Mo Chill BBQ owner Mike Harbin recommends you try anything on their regular BBQ menu, including brisket ribs, pork belly and the always popular beef ribs.

Mo Chilli BBQ

1980 Sims Way, Port Townsend
WA 98368
360-774-6627
mo-chillibbq.com



Nadine's Kitchen is another popular hotspot that will be at the Farmers Market on Saturdays in Port Townsend. Nadine's Kitchen features southern-inspired soul food with Pacific Northwest Ingredients. Owner and chef Grace Love is a renowned singer that has travelled extensively on tours in the US and abroad and uses that exposure of other places to enhance her culinary knowledge. Nadine's Kitchen will be serving up Chicken and Waffles and Soul Drink (a snow cone with a homemade syrup made with locally sourced ingredients) at the Market. Grace is working on incorporating a brick & mortar venue in the late summer.



Nadine's Kitchen

650 Tyler Street, Port Townsend
WA 98368

360-643-3852

nadinessoulkitchen.com



COMMUNITY UPDATE

If you need a little pick me up while exploring Port Townsend, stop at **Java Gypsies Coffee House** for a cup of joe! Over the last year, they have worked at making the back of their coffee-wagon more hands free and safer. “While it’s going to be cozy still, we’ve worked to alleviate congestion allowing for some personal distancing,” said Heidi Burbank. “Everything is made with love - it wouldn’t be on our menu if we didn’t pour our hearts into it. We believe this has truly been one of our strengths throughout the years. As we like to say, ‘our advertising budget is in that cup’. It goes out through each and every one of our drinks.”



Once guidelines permit, look for Java Gypsies around Port Townsend during events. “Large events are an essential part of our business equation. We are so looking forward to rejoining and playing our part in our community gatherings when restrictions on festivals and other large gatherings have been lifted and we’re all given the green light to open up and celebrate together, safely - then do count us in,” shared Heidi.

**Java Gypsies
Coffee House**

gypsycoffehouse@live.com



Another great local option is **Burritos y Tacos San Juan**. Located on the corner of San Juan Avenue and F Street in Port Townsend, the food truck offers authentic Mexican dishes. Co-Owner/Chef Jose Cervantes starts cooking at 6AM for that day’s menu, fresh every day, and opens at 11 AM until 7PM, Monday through Saturday, Spring through Fall. Jose began as the chef under the previous owner and in 2018 purchased the business he now runs with his family. This year, Jose opened on March 1st, a month earlier than previous years. To his surprise and great joy, customers lined up on day one and they have been busy since. Jose shared that this community has been good to them and satisfied customers inspire him to do this work he loves. Most popular is the generously portioned, San Juan Burrito, but their meat, veggie, or fish tacos are popular too, and the family is grateful to its many returning customers.



**Burrito Y Tacos
San Juan**

1440 F St, Port Townsend, WA 98368

360-344-8481

burritos-y-tacos-san-juan.business.site

As the weather warms up and hybrid events begin to return to Jefferson County, be sure to keep an eye out for these vendors and more that may pop up around town.

The Artful Sailor

Article courtesy of Pami-Sue (Salty Sue) Alvarado

Amazingly, the idea for The Artful Sailor began when the two of us came together on the street outside the 2016 Wooden Boat Festival with books, T-shirts and ukuleles, selling our goods and playing our music. Not long after that, with a leap of faith, we moved the business off the street and into the old Armory Building, creating a shop around the character and aesthetics associated with traditional skills and materials. The smells, the sounds, the feel, the colors; plus the music give us a sense of health, harmony and peace as well as purpose and a meaningful livelihood in a town known for its maritime trades. In that regard, The Artful Sailor dovetails with numerous other businesses in the region yet occupies a unique niche.

Growing up in rural Virginia, I couldn't have come from a more non-nautical background. My life in Port Townsend was as a caregiver for 20 years. This was very rewarding but when my long time client passed away, I viewed it as time for a change. Music is what brought Emiliano and me together but discovering his achievements as an author has led us both down the path we now call The Artful Sailor.

Emiliano Marino grew up in a New England sailing family steeped in nautical tradition. His notable sailmaking career began with an apprenticeship in San Diego in 1974 and evolved into a successful writing career in feature articles, magazine columns, and his world-renowned book, *The Sailmaker's Apprentice*, now in print for over 25 years. The *Sailmaker's Apprentice* is the foundation of our business. Emiliano is also a very talented musician. He left the sailmaking world for a number of years to pursue performing arts.

We incorporate music into our business by playing at the start of our workshops, at Art Walks and performing at the Wooden Boat Festival. In addition to public shows, we have often shared our music and good cheer with our local elders and assisted-



THE ARTFUL SAILOR



★ Whole Earth Nautical Supply ★

Located by the skate park at Point Hudson
410 Washington Street, or P.O. Box 375, Port Townsend, WA 98368
www.theartfulsailor.com

living residents. They are a wonderful audience!

Two years ago, we expanded the scope of our business with the addition of a Sail Exchange, a multi-faceted program that reuses sails and raises funds for youth education programs at the Northwest Maritime Center. Even in these hard times, people have availed themselves of the sailcloth to make all sorts of items other than sails. We recently presented the Northwest Maritime Center with our fourth donation check since the program started. The Artful Sailor works with and supports the Northwest Maritime Center in mission, finance and educational experience with the classes we provide to their students in their various maritime programs.

The Artful Sailor offers a similar kind of support to Olympic Neighbors of Port Townsend by selling a unique children's book, *Salty & the Pirates* as a fundraiser for the organization. It's a wonderfully collaborative, community-oriented project.

This May, The Artful Sailor Whole Earth Nautical Supply & Sail Exchange, will be celebrating its fourth year of operation. Despite the rough weather of the past year, our business has stayed afloat and kept its doors open with an upbeat and welcoming spirit. We rely less on walk-in trade and more on consultations by appointment and E-commerce. Besides doing sail repairs and consultation, we encourage self-reliant sailors by providing tools, materials, classes and guidance in sailmaking, rigging and canvas work. Our shop is a living museum of traditional sights, sounds & smells; an historical and maritime trades resource. In fact, The Artful Sailor just received an award from the Jefferson County Historical Society for historic preservation of traditional maritime skills.

It is our mission to continue inspiring and teaching sailors and landlubbers alike, the traditional skills of an artful sailor. Remember, "a stitch in time saves nine" and we're having a really good time doing what we love and loving what we do. We look forward to a new season of warmth and light.

Sail Port Townsend

PT's Newest Sailing Charter business!

Article courtesy of the Chamber of Jefferson County

Local sailor and educator, Amber Heasley, has a background in Marine Biology and first came to town in her early 20s to work an AmeriCorps position with the Port Townsend Marine Science Center. That love of the ocean quickly transferred to boats –sailing, powerboats, kayaks– anything that would get her out on the water, including working on small teaching vessels at the Northwest Maritime Center. She found anyone and everyone who could teach her how to sail and now has her USCG 50 Ton license & a US Sailing Basic Keelboat Instructor Certification. She has taught adult sailing courses as well as leading boating summer camps & school programs.

Summer 2021 will be Amber's second year in business as Sail Port Townsend, and she is excited about the addition

of a second boat. "We will now be operating two Thunderbird sailboats and can host larger groups with a flotilla!" The Thunderbird 26 is a Seattle design innovation from the 1950s and remains very popular today. Amber explains, "Thunderbird Sailboats are arguably Port Townsend's most popular boat as perfect day sailors because they are light and fast. They can sail well in the smallest of breezes but can also handle the stronger turns of weather."

For five years Amber worked in the day charter industry in cruise hubs in Alaska and the Caribbean and has long seen the opportunity for and wanted to start a summer sailing charter business in Port Townsend. The collapse of the tourism industry caused by covid-19 provided the opportunity for her to take her passions and experience and bring them back to Port Townsend by focusing on local tourism. "We were able to operate in



2020 because of how pandemic friendly sailing is – small groups outside in the breeze!"

"There are so many individuals who live here telling me that they've never been out on a sailboat," Amber shared, "I wanted to create a way to share this very Port Townsend experience with locals who want a new way to see and experience the place they love, tourists who come to this beautiful location to learn what Port Townsend's all about, and for visiting friends and families with whom you want to share your Port Townsend Love." Clearly, Amber loves sailing and her town, "It's so fun to be out on the water - always new and exciting things to see. I think we have one of the very best day sail venues in Washington State with our historic waterfront, marine wildlife and sea birds, other awesome boats to sail around, and snowcapped peaks of both the Olympics and Cascades. I like to keep my trips small and personalized. There is no need to have any experience sailing or on boats so guests can sit back and enjoy the sail or participate and get a turn on the helm!"

The Summer schedule includes 2 hour

sails every day from early June through the end of September, for private groups of 2-4 people, customizable individual trips for up to 6 people, flotillas for up to 8 people or sailing lessons! Trips leave from the Boat Haven Marina and can be booked online through the website SailPortTownsend.com, by phone **(360) 797-9105** or email: booking@SailPortTownsend.com.

So, if you've felt a bit cooped up lately and want to "feel the wind in your hair", contact Amber and see Port Townsend as it was meant to be seen – from the Water!

SAIL
PORT TOWNSEND

(360) 797-9105

www.sailporttownsend.com

E-mail:

booking@SailPortTownsend.com

Jefferson County
Chamber of Commerce
2409 Jefferson Street
Port Townsend, WA 98368

PRSR STD
U.S. Postage Paid
Port Townsend, WA
Permit No. 34



Community Concierge Cohort

Do you have a passion for our community? What is your interest? Are you a foodie? An adventure seeker? A trail hiker? A local wine connoisseur?

The Chamber of Jefferson County is looking for passionate volunteers that would be willing to spend a few minutes answering emails or brief phone conversations with visitors interested in all the exciting experiences our community has to offer. If you love your hobby and want to share it with others, please reach out to the chamber to discuss this fantastic Community Concierge opportunity. You can invest only a small amount of time to take a phone call or two or answer an email or hang out at the Chamber for a weekend hour occasionally, once the state allows for that. To volunteer or ask a question contact director@jeffcountychamber.org to learn more.

Place label here

Thank you for your ongoing support of the Chamber and our Community

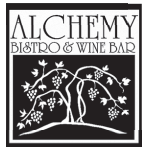
President's Circle



Community Visionaries



Community Investors



Due to the COVID-19 crisis, many events of our Chamber members as well as the Chamber have been postponed to future dates. Please check the Chamber Website for details and frequent updates: www.jeffcountychamber.org/events

San Juan Villa
Memory Care Community



112 Castellano Way
Port Townsend, WA
360-344-3114
CaringPlaces.com

Providing life enrichment in a secure environment for those with Alzheimer's Disease and other forms of memory loss.

With over **18,000** readers per week in print and **42,000** monthly visitors online, *The Leader* remains the best platform for growing your business throughout Jefferson County.

Call us today to find out what our marketing team can do for you.
360-385-2900 • www.ptleader.com



RAM COMMERCIAL
WILDER
Chrysler Dodge Jeep Ram
You Can Count On Us!

(360) 452-9268
800-927-9395

www.WilderChryslerDodgeJeepRam.com
53 JETTA WAY, PORT ANGELES

NISSAN Commercial Vehicles

AMERICA'S BEST COMMERCIAL VAN WARRANTY
5 YEARS/100,000 MILES
BUMPER-TO-BUMPER LIMITED WARRANTY

DAN WILDER NISSAN You Can Count On Us! **360-452-9268**
www.wildernissan.com **888-813-8545**