

# LUNCHEON SPEAKER

## RESCHEDULING

Jefferson County  
Community Leadership  
Awards

The Old Alcohol Plant  
310 Hadlock Bay Rd.,  
Port Hadlock, WA 98339

3:30 PM - 6:00 PM

### Speaker

Marine Corps. Major  
General Tracy Garrett

Please check the Chamber's  
website for updates.



Thank You To Our  
Sponsors:

New American Funding  
Platinum Partner  
The Business Guides  
Gold Partner  
Coldwell Banker Best  
Gold Partner

**Due to the COVID-19 crisis, many events of our Chamber members as well as the Chamber have been postponed to future dates. Please check the Chamber Website for details and frequent updates: [www.jeffcountychamber.org/events](http://www.jeffcountychamber.org/events)**



The Chamber  
OF JEFFERSON COUNTY

April 2020

# Business Insider

Serving the Businesses and Citizens of Jefferson County

## Cancelled: Women & Film Festival for PTF



With heavy hearts, the Port Townsend Film Festival has announced the cancellation of the "Women & Film" Festival, scheduled for April 24-26, 2020. Protecting the health of filmmakers, film lovers, staff and volunteers is the most important motivation for PTF. This difficult decision reflects the challenge of the unknown impact of Coronavirus on our community and the essential caution that all organizations must exhibit in this unfolding situation. So many businesses & families are navigating new territory, this cautionary gesture is made in support of the choices our healthcare professionals and governing bodies are faced with.

When you are washing your hands, try singing the songs from *The Sound*

*of Music* to lift your spirits. We are all in this together. We ask that if you are able, please continue to support local artists, The Rose Theatre, and gig economy workers in any way you can.

PTFF's film library remains open and staff will 'wave' their greetings from across the room on the 4th floor. The team at Port Townsend Film Festival is eagerly looking forward to September and the Fall Festival, when we all can come together and celebrate film and our cherished artists who dedicate their time and talents to this essential art form of film that our community has embraced for 21 years. Check out the "Fest Story" on [ptffilmfest.com](http://ptffilmfest.com) to learn more about the Fall Festival history. Acclaimed filmmakers have already



begun submitting films for the Fall Festival and this year's lineup is slated to have over 100 films including many international filmmakers!

Fall Festival passes are available on PTF's website at [www.ptffilmfest.com](http://www.ptffilmfest.com). Call 360-379-1333, email [info@ptffilmfest.com](mailto:info@ptffilmfest.com), or visit the PTF office, 211 Taylor Street, Suite 401A, open 10-4, Monday - Fri.

Special thanks is given to PTF's Women & Film Sponsors: Kitsap Bank, The Port Townsend & Jefferson County Leader, Caroline Littlefield, Holley Carlson Real Estate, KPTZ, KCTS 9, About Time, and Port Townsend Food Co-op. To learn more about sponsorship opportunities, contact [KC@ptffilmfest.com](mailto:KC@ptffilmfest.com).

Supplement to the  
March 25, 2020

Port Townsend & Jefferson County Leader  
226 Adams Street, Port Townsend WA 98368 [ptleader.com](http://ptleader.com)



# DIRECTOR'S REPORT

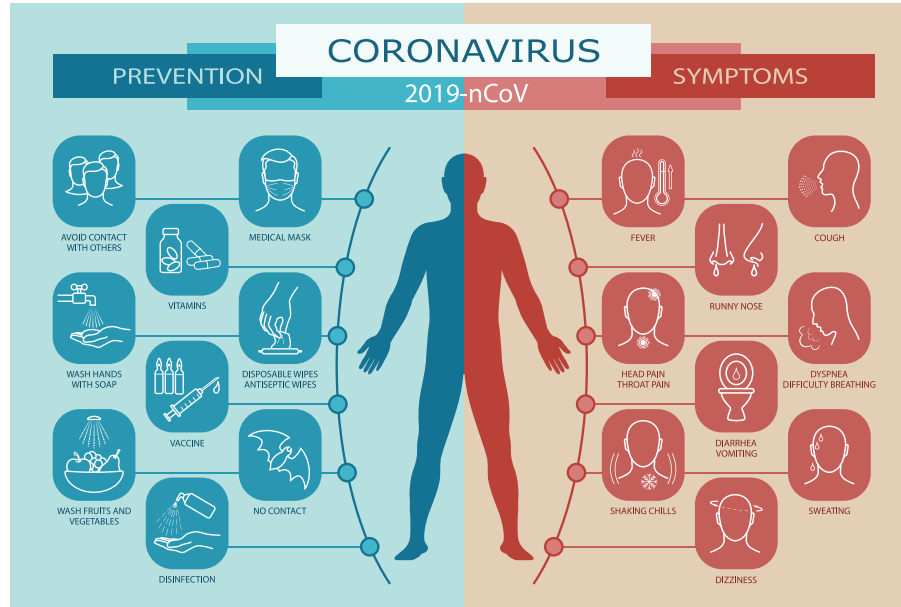
## COVID-19 Challenges



Arlene Alen

March certainly looked different than we thought it would with COVID-19 disrupting many lives and organizations' plans. With so many businesses

and organizations scrambling to rebook annual fundraisers, meetings and the rest let's help each other soar to success and make the most of this rescheduling opportunity. The Chamber, like many other groups, has had to reschedule some events including the new Women Doing Business group's kick-off breakfast. The Chamber and our partner the EDC / Team Jefferson are working together to assist our local businesses in resolving the many challenges that COVID-19 has brought to our community for the short and long-term. We have partnered with the Department of Emergency Management on COAD, Community Organizations Active in Disaster, a couple of months back with the first scheduled meeting in March. Clearly an inappropriate time but a necessary function. The Department and the Chamber will be moving forward with this, so watch your inbox for the opportunity to participate. There are numerous resources available and more on the horizon, please reach out to us for assistance and check the Chamber website for daily updates under "News".



The announcements will be made shortly of the nominees for the 2020 Jefferson County Community Leadership Awards. Thank you to all those who submitted so many highly qualified and deserving candidates and to the Kiwanians and Rotarians who made up our selection committee. This is an amazing diverse group of nominees and we look forward to seeing them and you at this year's event honoring their accomplishments as well as so many others building our community. We are looking at rescheduling this event and all the pre-events that are part of this process. Our current crisis is providing opportunity for these leaders and so many others in the community to continue to blaze a path to our great future.

There are just a few days left to check your membership listing in the Chamber system (use your credentials to log in or reach out to Ashlyn at membership@jeffcountychamber.org for a new password). Your membership investment must be current to be able to access your business listing, Ashlyn can assist you with all of this. As we are almost ready to go to press and take our iMap and GoGuide systems live online, it's imperative that your information be accurate. If you have not yet reserved your ad space, there are a few spots remaining so please do this asap. Visibility and connectivity will be even more important in the "post Covid-19" economy we will be moving into and these new programs are the key to successfully

## CHAMBER EVENTS CALENDAR

**RESCHEDULED**  
Jefferson County Community Leadership Awards @ The Old Alcohol Plant

Due to the COVID-19 crisis, many events of our Chamber members as well as the Chamber have been postponed to future dates. Please check the Chamber Website for details and frequent updates:  
[www.jeffcountychamber.org/events](http://www.jeffcountychamber.org/events)

### Correction:

"Eagle Pipe" was misspelled in their article. We apologize for the error.

navigating this new space.

The Chamber is here working to assist you in getting through this challenge with short term issues and solutions as well as long-term planning and connecting you with the resources you need. Reach out to us, connect with us, and together we will use this challenge to build a strong, diverse community leveraging our amazing history for the future.

## CHAMBER CONTACTS

### STAFF

**Arlene Alen**  
Executive Director  
director@jeffcountychamber.org  
360-385-7869

**Ashlyn Brown**  
Membership Experience Coordinator  
membership@jeffcountychamber.org  
360-385-7869

**Maggie Kelley**  
Administrative Assistant  
admin@jeffcountychamber.org  
360-385-7869

**Ryan E. Tippets**  
Communications Project Specialist  
communications@jeffcountychamber.org  
360-385-7869

### 2020 BOARD OF DIRECTORS

**Karen Best**  
President  
Coldwell Banker Best Homes

**Richard Tucker**  
President-Elect  
Jefferson Land Trust

**Sarah Hadlock**  
Treasurer  
The Business Guides

**Cammy Brown**  
Peninsula Legal Secretarial Services, LLC

**Robert Frank**  
Admiral Ship Supply, Port Townsend  
Marine Trades Association

**Brian Kuh**  
EDC Team Jefferson

**Luxmi Love**  
First Federal Bank - Port Townsend Branch

**Aislinn Palmer**  
Old Alcohol Plant, Bayside Housing

**Dana Petrick**  
Coldwell Banker Best Homes

**Scott Rogers**  
Aldrich's Market, Dogs-A-Foot

**Stephen Sklar**  
Edward Jones Financial

**Jessie Wedmore**  
Jefferson County YMCA

### Physical/Mailing Address:

Jefferson County Chamber of Commerce  
2409 Jefferson St.,  
Port Townsend, WA 98368

*The content of this publication is prepared by the Jefferson County Chamber of Commerce. We welcome submissions from Chamber members. Send articles and photos to director@jeffcountychamber.org.*



## Rhody Festival 2020

You don't want to miss this year's 85th Anniversary of the Rhody Festival! With the theme "Stop and Smell the Rhodies." The festival kicks off the week of May 11th with festivities that include the Pet Parade, Kiddie Parade, Trike Race, Hair and Beard Contest, Bed Race, and the Funtastic Carnival at the Fairgrounds. The Grand Parade tops off the weekend on Saturday, May 16th!

Tricycles, chameleons and school spirit, oh my! Bring your family and friends to see the Trike Race on Wednesday at 6 pm; anyone ages 1 to 6 years old can enter, assemble at Pope Marine Park on Water Street. The pet parade, Thursday of Rhody week at 4:30, is not one to miss! You would be surprised at the variety and talent of animals in the Jefferson County area. Wittily costumed creatures and knowledgeable owners and caretakers of all ages parade from the corner of Van Buren and Lawrence for several blocks. On Friday at 3:30 pm the Kiddie Parade will lift your heart: witness our local students marching alongside students from the wider peninsula, coordinated and themed costumes, impressive bands and a healthy dose of school spirit! The Kiddie Parade route starts at the Aldrich's corner and ends on Water Street. Friday fun continues with the Hair and Beard Contest judging at 6 pm and Bed Races at 6:30 pm at the corner of Water and Monroe Street.

Along with the Rhody Festival is the Port Townsend Sunrise Rotary's 8th Annual "Running of the Balls," event that will take place on parade day, 12:30 pm on Monroe Street. Come see THOUSANDS of golf balls released to "run" down the street! Whoever predicts the winning ball will receive a grand prize of \$2,000. This event raises money not only for the Rhody Festival but for many youth projects throughout Jefferson County, including distribution of a new dictionary to every third-grade student in East Jefferson County. Tickets for Running of the Balls are available now until the

event; check out Sunrise Rotary Facebook for more info. Also supporting this great festival are the Annual Rhody Open Caldwell Memorial Golf Tournament (contact the Port Townsend Golf Club for more information), the Elks breakfast on May 16th and 17th, Bar Stool Bingo at the Hilltop Tavern, as well as multiple private fundraising events.

The Jefferson Healthcare Rhody Run has been canceled due to the COVID-19 crisis. Celebrate being active and come walk or run with Rhody royalty, board members, and our community next year (May 2021). Event options include a 6k (around 3.7 miles), or 12k (around 7.5 miles). More information can be obtained at [www.rhodyrun.com](http://www.rhodyrun.com).

All these grand events are based on a long-standing Rhody Festival History. In 1935 local businessman Clive Buttermere "convinced the Hearst Metrotone News organization to come to Jefferson County and film the rhododendrons in bloom. As a prelude to Hearst's arrival, Mr. Buttermere and the business community organized a Queen competition for young women to be photographed with the rhododendrons. Nominations were made and the community could vote for competitors by shopping at participating merchants" ([Rhodyfestival.org](http://Rhodyfestival.org)). The American Legion helped bring about the first official Rhody Festival in 1936; a 1-day event with Royalty and a grand parade. From then on, the Festival grew in size and in variety of events; it was run and expanded by the Chamber of Commerce in the 1950s and became a non-profit corporation in the 1980s.

Currently, the Rhody Festival helps kick off the tourist season for Port Townsend and is enjoyed by thousands of



local residents and visitors; moreover, it is a huge economic boost to the community. The Rhododendron Festival Association's vision is to engage more volunteers and make the festival bigger and better with every year. In order to keep this festival alive many volunteers are needed and welcomed – on projects leading up to the event as well as on event days. Volunteer projects include helping during the weekly events as well as the grand parade. If interested contact us via email – [rhodygrandparade@gmail.com](mailto:rhodygrandparade@gmail.com) – if you have an hour – or more – we would love to have you join our team!

Parade applications and more information can be obtained at [www.rhodyfest.org](http://www.rhodyfest.org) or the Rhody Facebook page – Rhododendron Festival Association.





# Why is Jefferson County Getting Lean?

### We have challenges. We have strengths.

We are a rural county with a small population in an out of the way spot on the Olympic Peninsula. We do have a strong community with many talented people. Having small businesses build plans around Lean Thinking is part of an economic development strategy. Lean Thinking, based on two core pillars of Continuous Improvement and Respect for People, provides a common language and gets us through future planning. It opens up opportunities.

### Lean Thinking Classes are part of a strategy to help us meet the challenges.

Since 2014, 275 people in 86 organizations have begun a Lean journey by instruction offered through EDC Team Jefferson. Entities such as our public libraries, government agencies, businesses in manufacturing, IT, retail, real estate, farming and construction trades, as well as non-profits and a school district have completed training. As far as we know, Jefferson County is the only location in the U.S. that has a commu-

nity Lean initiative including for-profit, non-profit and government sectors.

Our main class “Improving Enterprise Productivity through Lean Thinking” provides experiential learning in the areas of: workplace organization, communication, process flow, root cause analysis, problem solving, visual management and implementation strategies. Additional offerings have included Lean Thinking for Startups and Sole Proprietors, Lean Thinking for non-profits, and specialized classes for specific sectors.

We have started applying Lean Thinking to perhaps our biggest issue today: housing. Lean Thinking and Community Network Building are core drivers of the Housing Solutions Network.

### One Example – ACI Boats

Since beginning their improvement journey three years ago, ACI boats has applied Lean Thinking to help manage their growth. As one walks through their factory, you can't help but notice the extensive visual management that ACI has implemented. Work planning boards and daily huddles let everyone know what is being worked on and what

is coming up in the next 2+ weeks. This allows everyone to see when a schedule may be slipping and focus resources to get back on track.

One great feature of Lean Thinking is giving back to the community. ACI is one of several alumni organizations that have opened up their facilities to show current classes of “Lean in Action.”

### Future of Lean in Jefferson County

Our vision is for county enterprises in every sector to embrace Lean Thinking principles to improve productivity, provide excellent customer service, employee satisfaction and stimulate economic development.

Over the past 6 years we have grown organically, through collaborative partnerships, growing awareness, competency and implementation of Lean Thinking principles and tools. As

the people who have taken our class improve their organizations and also spread out throughout the community, we are finding a growing awareness of the benefits of Lean Thinking.

Moving ahead, we hope to increase the core of Lean subject matter experts who become trainers and Lean coaches. We have several people in the community who have a Lean background and it would be great if some of our alumni reach a comfort level that they can teach and guide others to learn and use Lean principles. Ultimately, we want to build a sustaining culture in Jefferson County that goes beyond the current team who have led the effort so far.

Learn more at [edcteamjefferson.org/lean](http://edcteamjefferson.org/lean), visit the Facebook page “Jefferson County Thinks Lean” or email Jay Bakst at [jay@raviyah.com](mailto:jay@raviyah.com), Earl Murman at [murman@mit.edu](mailto:murman@mit.edu) or call 253-709-2850.



*Raviyah Training  
and Consulting*



home of the 20% solution



# Key City Fish Company

"I struggled for years to find a viable, exciting, meaningful place to be... And I found that place in learning about and sharing top-quality food. I love food! I have loved it my whole life and love the opportunity to work with food" revealed Johnpaul Davies, owner of Key City Fish in Port Townsend. Key City Fish, currently located on 10th street in the Boat Haven, offers a variety of high-quality seafood, meat and poultry.

Once a single owner-operator team, Key City now has 35 year-round employees and 3-4 part-time employees. Key City services most of Western Washington! Four to five trucks run six days a week from Port Angeles across the peninsula, down to Olympia, up to Bellingham and across Whidbey Island. Retail options go beyond fish; the menu includes beef, pork, chicken, cheese, mushrooms, and the full line of fresh and frozen seafood. Tom Emory offered and sold Tom's Sausages to Key City and so Key City offers local sausage varieties as well (3 of Tom's sausages are on Waterfront Pizza!): Linguica, Sweet Italian, and Cajun Sausage. Key City supplies Doc's Marina Grill, Silverwater Café, Aldrich's Market, the Food Coop, Sirens Pub, Alchemy Bistro and more! They deliver to independent restaurants and larger markets. Johnpaul imparted, "Most restaurants in town do some business with us, many do significant business with us. We are very appreciative of our community partnerships. We also want to thank our loyal customers-many of whom go back to "tent days" over 25 years ago!"

Key City first opened in 1994; its original

location was a 400-500 square foot space in the building that now houses Quimper Mercantile, and Don's Pharmacy. However, owner Johnpaul traces Key City's beginnings even earlier. Johnpaul has always loved local markets and fish. After growing up in California's Bay area, Johnpaul moved to Seattle in '85 as it was the home and base for the Alaskan fishing fleet. Johnpaul attended University of Washington and worked at the retailer and wholesaler University Seafood and Poultry. While at UW, Johnpaul met his partner Erin Lamb. After school, Johnpaul alternatively worked in the world-famous Pike Place fish market in spring, fall and winter and fished in Alaska during the summer. When Johnpaul and Erin had a son, they chose to raise him closer to family on Kitsap Peninsula; the three moved to Port Townsend area.

Johnpaul got a position with New Day Fisheries, and thanks to New Day Fisheries owner Scott Kimmel, was able to open a surprisingly successful retail tent. With the challenge of the changing seasons, and the growing customer base, he soon realized a need for a permanent retail market location. New Day Fisheries agreed to be the wholesale supplier of Key City, a driver was hired to deliver to Seattle contacts, and Key City was born!

When asked what sets Key City Fish apart, John replied, "I've worked for a number of family businesses- and I feel that small, local businesses are vital and part of the life blood of a community. I wanted to create an environment where people want to work for you and customers can't wait

to return... Our business team is family and our business is connection and community." Key City Fish supports the Kinetic Sculpture Race, the Marine Science Center, Strange Brewfest, Centrum, the Rhody Parade, and Key City Public Theater. Key City also recently acquired more space in the port, for a total

of 3,750 square feet (versus the old days of 400 square feet)! From Johnpaul, "We are an active member of the Port Townsend Maritime Trades Association and everyday see the positive and powerful economic impact of the port for the area; we are proud and happy to be a part of the port!"



## Key City Fish Company

307 10th St,  
Port Townsend, WA 98368

360-379-5516

keycityfish.com





## MEMBER NEWS

# American Legion Marvin G Shields Memorial Post #26

The year is 1919, and even though World War I has just finished, morale is low for the troops stuck overseas. Many veterans are suffering from post-traumatic stress syndrome (PTSD) and shell shock, to name only two challenges. At

the request of a number of concerned officers and enlisted soldiers, Congress came up with a charter to meet these challenges; this charter became the basis for the American Legion. Over time, the American Legion “-evolved from a group of war-weary veterans of World War I to one of the most influential non-profit groups in the United States” (American Legion, 2020). With over 13,000 posts worldwide and 2 million legionnaires, the organization has been able to bring hundreds of benefits to veterans and produced important programs for children and communities. Port Townsend’s Legion, the Marvin G Shields Memorial Post, is similarly influential with all the programs and services it offers, has a fabulous location in town



and exciting plans for the future.

Port Townsend’s American Legion just celebrated its 100<sup>th</sup> birthday! The first meeting was held August 26<sup>th</sup> in 1919 at the Sailor’s Club in Port Townsend. The current location is a tough one to beat; the Legion sits next to the Jefferson Museum of Art and History on Monroe Street, across from Pope Marine Park, a gorgeous view of Port Townsend Bay, and kiddy corner to the Northwest Maritime Center. Moreover, the current location started as the first USO Hall in the Pacific Northwest! The Legion bought the property and building in 1946. Over the ensuing years and especially in the past six months, thanks to funding support from Port Townsend Film Festival, the American Legion has been able to keep the historical structure but tackle remodel projects such as uncovering the original, beautiful Birdseye Maple floors, installing new insulation and sound-absorbing walls, painting, and new decorations. Port Townsend is lucky; not all Legion posts have a full bar, ballroom, and community shelter; American Legions across the country can be as simple as a trailer or part of someone’s house.

The Legion offers veteran services ranging from assistance navigating government paperwork, to helping purchase a new tire, wheelchair battery or prosthetic. When a veteran passes, the Legion has a Honor Guard that performs the three-volley salute, taps, and flag presentation for the remembered individual. Every year the Legion offers \$1500 scholarships to four students headed to college or other after-high-school education programs. Moreover, the American Legion Hall can be rented for all types of events; the American Legion is the venue for the Welcoming Santa event in December, Strange Brewfest, and others. American Legion sponsors the Memorial Day and Veteran’s Day PT Summer Band events, Old Fourth of July, and of

course, the Rhody parade which the Legion helped to found over 30 years ago!

Staff includes Robert Saring, Club Manager, a janitor, and 10-20 volunteers. Robert said that one of his favorite things about the Legion is that everyone is equal and welcome! There are no ranking systems at the Legion; imparted Robert, “It’s still funny to me as an E3, Lance Corporal, to boss a full-bird Colonel around and direct him to do the dishes! We’re all legionnaires here; the focus is on camaraderie, being yourself, and knowing that everyone here understands. This is not just a veteran’s venue, it is a place for people of all ages, families, husbands, wives, and guests.”

Looking ahead, the plan for 2020 and beyond is to have more large-scale dances and concerts like in the old days of when the space was a USO Hall. Also, the Legion has two pool teams and is looking to grow the adult softball team. When it comes to events, the Legion is a wonderful venue option for weddings, dinners and more! Anyone can rent the American Legion building, you do not have to be a veteran. The Legion is also talking with Jefferson County Historical Society about hosting the first Friday Lecture series at the Legion’s location and with the Daughters of the Revolution about putting in a new garden and benches in the memorial area on the water side of the building. No matter the changes and shifting times, the Marvin G Shields Memorial Post will “remain an organization made up of and for the community, serving veterans, youth, and the wider area.”

**“About: History of the American Legion.”  
The American Legion, 2020,  
[www.legion.org/history](http://www.legion.org/history).**

### San Juan Villa

Memory Care  
Community



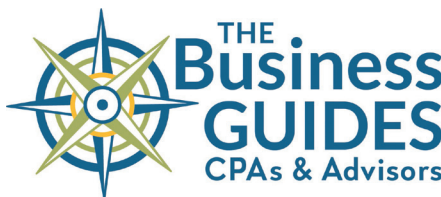
112 Castellano Way  
Port Townsend, WA  
360-344-3114  
[CaringPlaces.com](http://CaringPlaces.com)

Providing life enrichment  
in a secure environment  
for those with Alzheimer’s  
Disease and other  
forms of memory loss.

## Thank You To Our Sponsors:



- Platinum Partner -



- Gold Partner -



COLDWELL BANKER

BEST HOMES

- Gold Partner -



## NEW MEMBER PROFILE

# Eagle Pipe Heating & Air

Eagle Pipe & Mechanical, LLC was started in 2014 by Lori Tschohl and her brother, Michael Tschohl out of a desire to combine Michael's many years of gas pipe and HVAC experience with Lori's years of business experience. Eagle Pipe & Mechanical underwent a rebranding in 2018 and now operates under the DBA Eagle Pipe Heating & Air.

Lori started out as a McDonald's crew member, later becoming a McDonald's Franchisee. From there she went on to

open two Pandora Jewelry stores- one in Salt Lake City and one in Boise.

Lori is an ambassador for the Women in HVAC organization, an organization which provides regional outreach to educational groups and facilities interested in promoting careers in HVAC- specifically bringing women into the trades. Michael brings with him over 40 years of experience in the industry, specializing in commercial gas pipe. Michael has worked with the best at Infrasource and in Las Vegas as a part-owner in a Heating & Air business.

Eagle Pipe Heating & Air is proudly woman-owned, and is a trusted source for an array of services to help serve their customers. Service is at the heart of all they do, from Lori's years of service with the Ronald McDonald House Charity and many others to the philanthropic causes Eagle Pipe Heating & Air employees are involved in in their spare time.

What sets Eagle Pipe apart from the competition is the superior customer service experience they strive to provide every client they meet. Starting with your first phone call and ending with an expert leaving your home after a service call, installation or yearly tune up. Their team firmly believes in their mission and vision for the company - "Eagle Pipe Heating & Air will provide a superior customer

service experience by soaring above challenges and providing solutions through dedication and excellence." No matter the size of your project, they will take expert measures to make your vision a reality.

Eagle Pipe Heating & Air services most of Western Washington, and has locations in Port Ludlow and Lynnwood. They have seen a need for a reliable local company around their Port Ludlow location and are working towards being the go to for Jefferson County for all of their heating, air, gas pipe, water heater and fireplace needs.

With the current COVID-19 Crisis, Eagle Pipe Heating & Air is still up and running and ready to serve customers. They issued a statement stating that they are taking all precautions necessary to prevent the spread and still be able to keep customers comfortable. They are utilizing innovative Indoor Air Quality technologies at

their disposal- give them a call for a free in-home assessment and estimate at 206-765-6851. They are available to help with whatever project or need you want to bring to life.

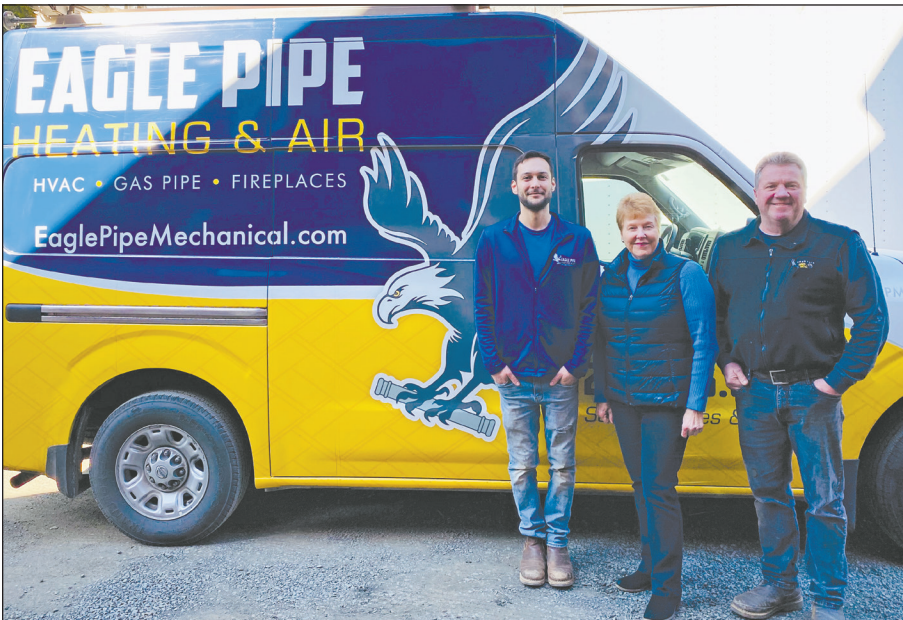


## Eagle Pipe - Heating & Air

54 7 Sisters Rd,  
Port Ludlow, WA 98365

(206) 765-6851

[www.eaglepipemechanical.com](http://www.eaglepipemechanical.com)



## SEA CHANGE IS YOUR LOCALLY OWNED CANNABIS CHOICE



We're Travis and Nicole Mason, and we're proud to announce our recent ownership of "The Biggest Little Weed Cabin in Washington." We're born and raised right here on the Olympic Peninsula, and we are committed to the same values, vendors and personal relationships that make Sea Change what it is.

### SEA CHANGE CANNABIS

282332 HWY 101

Port Townsend, WA 98368

360.385.1320

[www.seachangecanna.biz/](http://www.seachangecanna.biz/)

20 minutes from Port Townsend  
20 minutes from Sequim  
20 minutes from Hood Canal Bridge

"The Biggest Little Weed Cabin in Washington State!"





Jefferson County  
Chamber of Commerce  
2409 Jefferson Street  
Port Townsend, WA 98368

PRSR STD  
U.S. Postage Paid  
Port Townsend, WA  
Permit No. 34

## VOLUNTEER SPOTLIGHT

### Bonnie Fritz

Anyone able to hear about Bonnie's world travels, careers, and interests would have no doubt of this lady's strength and ability to weather great storms.

Bonnie grew up in Wilber Nebraska, 40 miles southwest of the capital city, Lincoln. She got her liberal arts degree from a women's college in Colorado, followed by a master's in early childhood education from the University of Washington. Amongst her careers and education, Bonnie raised two children, Greta and Eric. Bonnie worked for King TV, helped co-run a film production company, and was an educator for over 35 years, teaching English in over 52 countries. Her love of education never died; Bonnie got a second master's in Education Administration, a PhD in Education Administration, and second bachelor's degree in English as a second language.

Despite her degrees, travels, and careers, "my greatest achievements are my kids!" proclaimed Bonnie. "Nothing else comes close- I am so, so proud." Greta is news director of KCBX in San Luis Obispo California and Eric runs Zen River Retreat Cabins in Quilcene.

The family first came to Port Townsend while Bonnie was helping to run the film production business. Fast forward through the years, and after helping to take care of her aging parents in Nebraska, Bonnie moved back to Port Townsend in 2007. Bonnie taught at different locations in the area before working as manager for the Rothchild House and Commanding Officer Quarters for 5 years. Bonnie began volunteering at the Visitor Center in 2009; "I love educating people, love working with tourists, love helping people to learn about all the extraordinary things we have here" exclaimed Bonnie. "My passions are history, museums, and accommodations, there isn't a place in town I haven't been in! When I'm not here at the Visitor's Center, I'm reading or helping my son with the Zen River Retreat." Learn more about our historical, incredible area and meet Bonnie and our wonderful volunteers of the Port Townsend's Visitor's Center today!



Place label here

## CHAMBER AFTER HOURS

Due to the COVID-19 crisis, many events of our Chamber members as well as the Chamber have been postponed to future dates. Please check the Chamber Website for details and frequent updates:  
[www.jeffcounty.chamber.org/events](http://www.jeffcounty.chamber.org/events)





**RAM**  
COMMERCIAL

**WILDER**  
Chrysler Dodge Jeep Ram  
You Can Count On Us!



(360) 452-9268  
800-927-9395

[www.WilderChryslerDodgeJeepRam.com](http://www.WilderChryslerDodgeJeepRam.com)  
53 JETTA WAY, PORT ANGELES

Thank you for your ongoing support of the Chamber and our Community

### President's Circle



### Extreme Visionary



### 1ST SECURITY BANK



### NISSAN Commercial Vehicles

AMERICA'S BEST COMMERCIAL VAN WARRANTY

**5 YEARS/100,000 MILES**  
BUMPER-TO-BUMPER LIMITED WARRANTY



**DAN WILDER NISSAN** You Can Count On Us! **360-452-9268**  
[www.wildernissan.com](http://www.wildernissan.com) **888-813-8545**